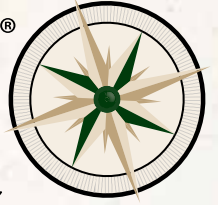


*Savings, comfort, peace of mind. What's your destination?*



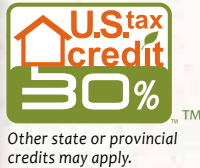
# Compass® Series



## Vertical Combination System

Multi-Positional

GeoComfort® Compass® Series geothermal systems are expertly designed to be technologically advanced, exceptionally efficient and uniquely crafted. Our combination systems merge a forced air heating and cooling system with the indulgence of whisper-quiet radiant floor heating in a single unit. This system allows your family to enjoy the comfort of floor-warming, hydronic heat in specific parts of your home while also delivering efficient forced air heating in other areas. As with all GeoComfort geothermal systems, air conditioning is also supplied by this single unit.



*GeoComfort combines the most efficient technology with the most comfortable heat delivery method available.*

Compass Series heating and cooling systems' industry leading design combines the highest quality features with an appliance grade cabinet. That combination provides an experience like no other, helping you make your home the most it can be.



[www.geocomfort.com](http://www.geocomfort.com)

# Live comfortably.™

## Special Features:

- ✦ All aluminum micro-channel air coils prevent corrosion, enhancing reliability and life expectancy.
- ✦ Hot water generator allows the capture of free, unused heat typically cutting hot water cost by 30-50%.
- ✦ Standard variable speed blower motor ensures quiet start up and operates at a fraction of the cost of a conventional blower motor.
- ✦ Hydronic heating function allows a single unit to provide forced air heating, forced air cooling, and radiant floor heat. Since you only need one unit, this reduces installation costs and minimizes system maintenance.



For additional peace of mind, ask about the range of GeoComfort warranties: **standard, extended, and optional limited lifetime compressor.**



## Unit Performance

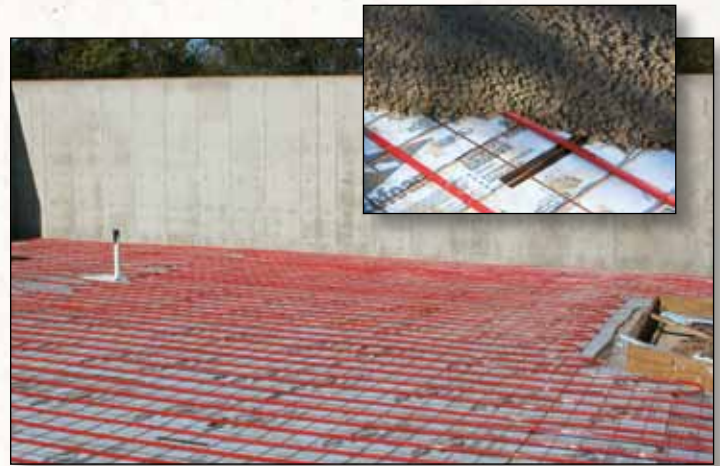
Model	Capacity	Heating		Cooling	
		Btu/hr	COP	Btu/hr	EER
GCT024C	Full Load	19,400	4.5	25,900	20.1
	Part Load	16,100	4.9	20,300	27.9
GCT036C	Full Load	28,500	4.5	38,400	18.5
	Part Load	22,200	4.9	29,200	27.4
GCT048C	Full Load	38,900	4.1	50,800	18.2
	Part Load	29,900	4.6	39,700	27.3
GCT060A	Full Load	48,400	3.8	62,800	16.9
	Part Load	38,700	4.2	48,600	23.5
GCT072A	Full Load	57,900	3.6	67,800	15.0
	Part Load	48,100	4.0	55,200	20.1

**Note:**  
 Rated in accordance with ISO Standard 13256-1 which includes Pump Penalties.  
 Heating capacities based on 68.0°F DB, 59.0°F WB entering air temperature.  
 Cooling capacities based on 80.6°F DB, 66.2°F WB entering air temperature.  
 Entering water temperatures Full Load: 32°F heating / 77°F cooling.  
 Entering water temperatures Part Load: 41°F heating / 68°F cooling.

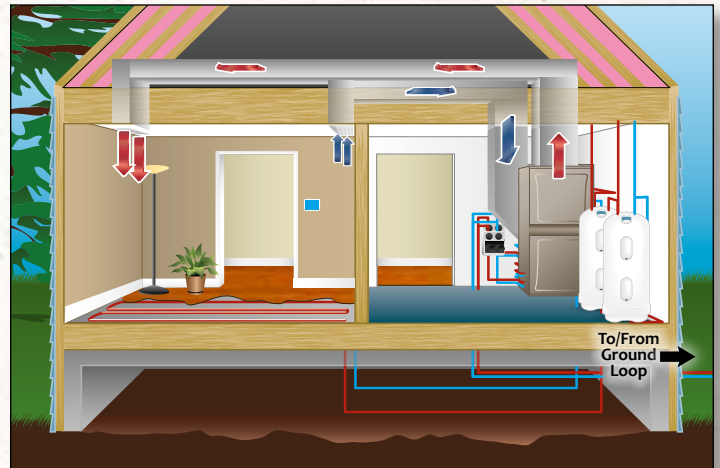
## Unit Applications:

One of the many advantages the GeoComfort Compass Series Combination unit offers is the flexibility of applications designed for each home.

- ✦ Radiant Floor Heating
- ✦ Domestic Hot Water (Hot Water Generator)
- ✦ Forced Air Heating
- ✦ Forced Air Cooling



Example of radiant floor tubing installed in a basement. The tubing is placed over an insulation pad. Concrete is then poured over for the floor.



The above illustration depicts a typical combination system installation with forced air and radiant floor in heating mode. Other installation options are possible.

GeoComfort systems are built in the heart of America with stringent quality control systems and the most comprehensive testing within the geothermal heating and cooling industry.

Please Recycle.  
Thank You.  
EMGL0006



Product specifications reflect available information at time of printing. Design and specifications may change without notice.

©Enertech Global, LLC. 2011-2012

Rev: 24 Feb 2012-B